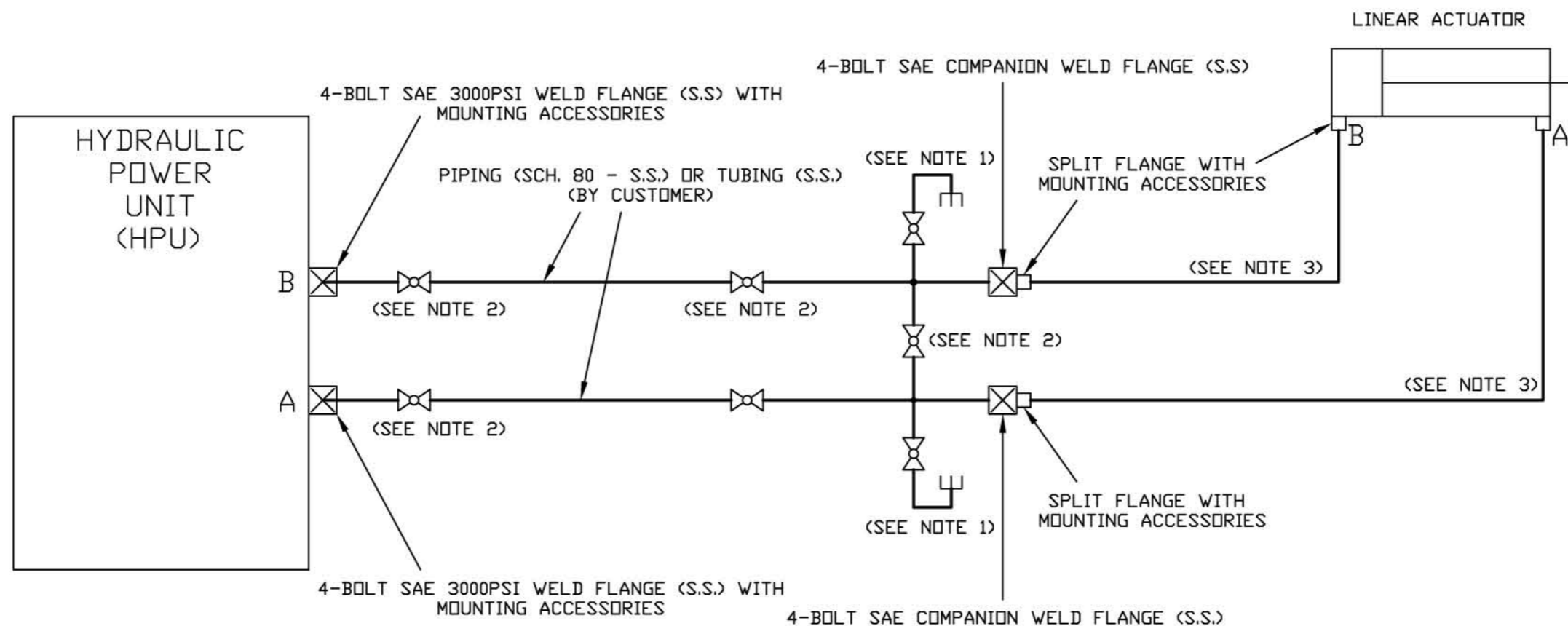


DATE	SYM	REVISION RECORD	ECN#	DR	CK



NOTES:

1. RECOMMEND BLEED VALVES FOR EACH LINE AT HIGH POINT
2. RECOMMEND BYPASS / ISOLATION VALVING FOR EACH LINE
3. 1-1/2" OR 1" HYDRAULIC HOSE, FLEXIBLE HOSE 3FT.

THIS IS AN AUTOCAD DRAWING. DO NOT REVISE MANUALLY. CAD FILE # 11811



INC., ELK GROVE, ILL.



THIS DRAWING IS THE PROPERTY OF M.E.A. INC. IT IS LOANED WITH THE UNDERSTANDING THAT IT MAY NOT BE REPRODUCED NOR MAY THE INFORMATION CONTAINED HEREIN BE USED FOR THE MAKING OF DRAWINGS OR FOR MANUFACTURING PURPOSES WITHOUT THE WRITTEN CONSENT OF M.E.A. INC.

TOLERANCES (EXCEPT AS NOTED)	± N/A	SCALE	N/A	DRAWN BY	MC	CK	RM
				APPROVED BY	MAC		

TITLE
FIELD PIPING

DATE	DRAWING NUMBER	REV.
04-28-08	BP12495-507	0